

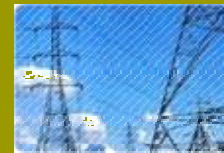
NSI GSMPro

GPRS Router DataSheet

2.5G-3G mobile communication technology has become widely used of industrials and utilities in recent years and many customers are seeking reliable, flexible and cost-effective data channel to build their information system. Many applications such as ATM, POS, SCADA and surveillance system will require data channels covered all country; this brings a bright future for mobile data networks applications.

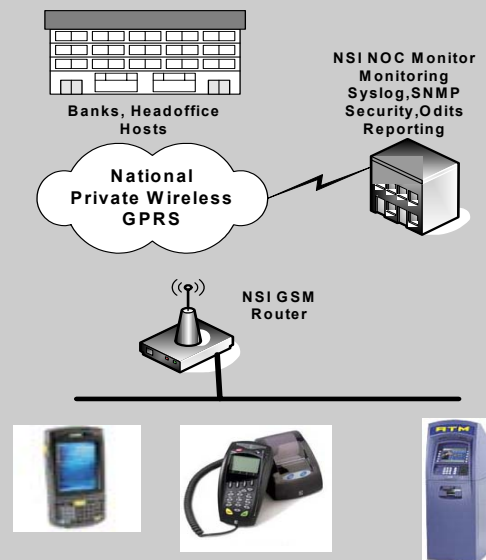
The NSI GSMPro r1 router is easy to install, reducing the reliance on the end customer and enables direct access to your remote LAN devices for control and monitoring purposes. It enables companies to remotely access equipment at mobile, remote networks and isolated sites.

It offers wireless network routing optimized for machines, small networks and specialised static IP services now available from NSI wireless network. It offers low cost router operation through Dial-out, Dial-in and Always Connected modes of operation, GSMPro Series router is a dedicated ideal data transmission channel for industrial / POS applications.



Applications

- ATM Machine Transmissions
- Debt Credit Terminals
- Power station monitoring and control
- Remote POS (point of sale) terminals
- Ethernet network failover option
- Fleet management
- Distribution network supervision
- Phone line replacement
- Vending machine remote access
- Portable Data Collection
- Parking Meters and Taxi Cabs



Network Services International
 1721 Bishop Road,
 Cambridge, Ontario.
 N1T 1N5 Canada
 1 866 416 0964
www.nsiretail.com

Benefits and Features

- Support Quad band GPRS network
- Support multiple protocol conversion
- Transparent data transmission
- Ethernet or RS-232 interface
- Easy To Use and Flexible Intelligent Router
- Realtime clock
- WEB/Telnet/console management interface
- Support radio network data envelope counting
- Always-On-Line
- Self-diagnostic and alarm output
- Local/remote profiles backup and retrieve
- Local/remote firmware upgrade
- Urgent event alarm via SMS
- Built-in DHCP server
- Support DMZ host
- Firewall and NAT
- Support packet filtering
- Support data center communication
- Support APN



Radio Frequency

GSM Phase2/2+
Dual-band GSM900 and DCS1800
Compliant to GSM phase 2/2+

Output power:
Class 4 (2W) for GSM900,
Class 1 (1W) for DSC1800

Power supply

Supply voltage range: 5 - 25VDC
(9V suggest)

SIM interfaces: 3V/1.8V
Firewall Speed: 100 M bps

Power consumption:
– Sleep mode 3.5 mA
– Speech mode 300 mA (average)
– Power down 50 μ A

Specifictaion

Serial data rate:
300 to115,200 bits/s

Data transmission up to 153.6Kbps

Dimensions :

Dimensions: 59*100*23mm
weight:200g

steel shell:
good electromagnetic shield
and , heat radiate performance

Interface

standard RS-232
Standard serial Port (DB-9)

Ethernet: 10/100BaseT

Configuration interface: WEB/
telnet/console
Antenna: 50ohm/SMAFemale

Environment

Ambient temperature -20°C to
 $+60^{\circ}\text{C}$

Storage temperature : $-30^{\circ}\text{C} \sim 85^{\circ}\text{C}$
humidity : $\leq 90\%$